

Osborne Survey, © Crown Copyright 2020. All rights reserved. Licence number 100020420

Site Location Plan

Site Location Plan



Schedule of Accommodation

Phase 1 - 319 Bedspaces

Type A1A	14 Beds	= 4
Type C	8 Beds	= 2
Type D	8 Beds (appt)	= 1
Type E	12 Beds	= 2
Type F	14 Beds	= 3
Type G	18 Beds	= 2
Type H	14 Beds	= 1
Type I	14 Beds	= 2
Type J	14 Beds	= 1
Type K	14 Beds	= 2
Type L	14 Beds	= 2
Type M	14 Beds	= 2
Type N	14 Beds	= 2
Type O	14 Beds	= 2
Type P	14 Beds	= 2
Type Q	14 Beds	= 2
Type R	14 Beds	= 2
Type S	14 Beds	= 2
Type T	14 Beds	= 2
Type U	14 Beds	= 2
Type V	14 Beds	= 2
Type W	14 Beds	= 2
Type X	14 Beds	= 2
Type Y	14 Beds	= 2
Type Z	14 Beds	= 2

Phase 2 - Circo 274 Bedspaces

Reside + 812/274 = 116 Bedspaces, within apartments ranging from Studio (18m² min) to 4 Bedrooms. All bedrooms contain ensuite showers and one (18m² min)

Type A1A (H&O)	14 Beds	= 4
Type B	8 Beds	= 2
Type C	8 Beds	= 1
Type D	8 Beds	= 1
Type E	12 Beds	= 2
Type F	14 Beds	= 3
Type G	18 Beds	= 2
Type H	14 Beds	= 1
Type I	14 Beds	= 2
Type J	14 Beds	= 1
Type K	14 Beds	= 2
Type L	14 Beds	= 2
Type M	14 Beds	= 2
Type N	14 Beds	= 2
Type O	14 Beds	= 2
Type P	14 Beds	= 2
Type Q	14 Beds	= 2
Type R	14 Beds	= 2
Type S	14 Beds	= 2
Type T	14 Beds	= 2
Type U	14 Beds	= 2
Type V	14 Beds	= 2
Type W	14 Beds	= 2
Type X	14 Beds	= 2
Type Y	14 Beds	= 2
Type Z	14 Beds	= 2

* Denotes accessible accommodation suitable for wheelchair users.

Total bedspaces = circa 586

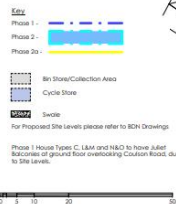
Each block of apartments incorporates cycle/bike storage and shared communal areas at ground floor levels including a Gym, Car Parking - Circo 308 spaces provided across the site

Phase 1 = 142 Spaces
Phase 2 = 137 Spaces

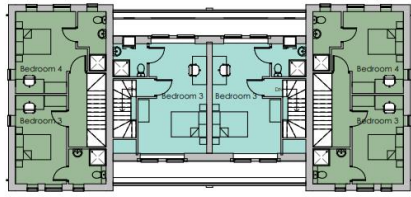
Boundary treatment
B1 B22 = 1.8m high brick wall with plant
B2 B73 = 1.8m non-climbable (F1171 Security rating) (SR1) 1.1m long & yellow treatment (see Section B2171 SR1 or to similar B20 standards with Brick Plans of Gate Positions

Phase 2 to be confirmed.

Long & Helen Woodcock Architects



Site Layout Plan



2nd Floor



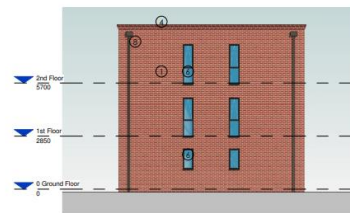
1st Floor



Ground Floor



3D View 1



Side Elevation

Materials Schedule

- ① Brick to approved sample
- ② GFR Insulated Door with Vision Panel
- ③ Composite Slate to approved sample
- ④ Wick Headers & Corbelling to approved sample
- ⑤ Lead effect sashmies to approved sample
- ⑥ Double Glazed Window to approved sample
- ⑦ Double Glazed Door to approved sample
- ⑧ Black UPVC Ironmoleter Goods
- ⑨ Velux Rooflight or similar approved



Front Elevation



Rear Elevation

House Type A and B



2nd Floor



1st Floor



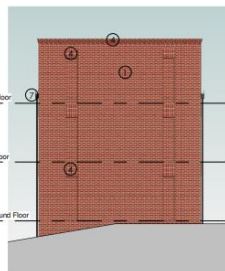
Ground Floor



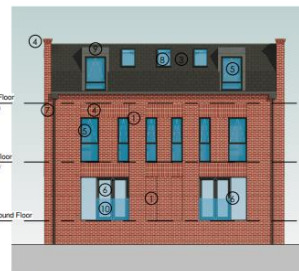
Indicative 3D View



Front Elevation



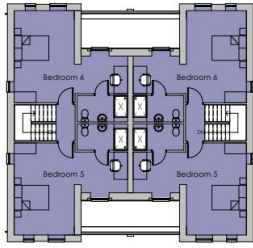
Side Elevation 01



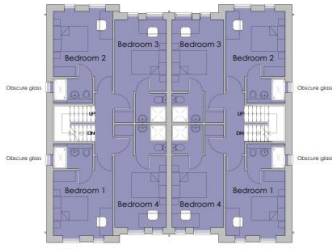
Rear Elevation

- Materials Schedule**
- ① Brick to approved stamp
 - ② GRP Insulated Door with
 - ③ Composite Sillie to app
 - ④ Brick Headers & Corbell
 - ⑤ Double Glazed Window
 - ⑥ Double Glazed Door to
 - ⑦ Black UPVC Rainwater C
 - ⑧ Velux Rooflight or similar
 - ⑨ Lead effect sparses to r
 - ⑩ Juliet Balcony

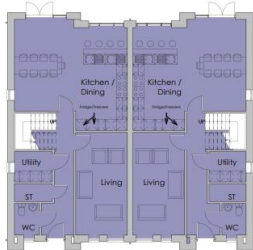
House Type C



2nd Floor



1st Floor



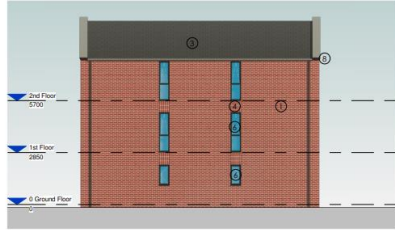
Ground Floor



Front Elevation



Rear Elevation



Side Elevation

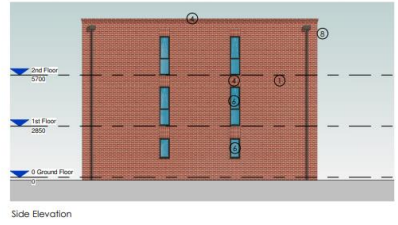
- Materials Schedule**
- ① Brick to approved sample
 - ② uPVC Insulated Door
 - ③ Composite Slate to approved sample
 - ④ Brick Headers & Corbelling to approved sample
 - ⑤ Lead effect cladders to approved sample
 - ⑥ Double Glazed Window to approved sample
 - ⑦ Double Glazed Door to approved sample
 - ⑧ Black UPVC Rainwater Goods

Area Schedule GIA			
Number	Name	Level	Area
1	6 bed house	0 Ground Floor	72 m ²
2	6 bed house	0 Ground Floor	72 m ²
0 Ground Floor: 2			144 m ²
1	6 bed house	1st Floor	73 m ²
2	6 bed house	1st Floor	73 m ²
1st Floor: 2			146 m ²
1	6 bed house	2nd Floor	63 m ²
2	6 bed house	2nd Floor	63 m ²
2nd Floor: 2			126 m ²
			416 m ²



3D View 1

House Type E

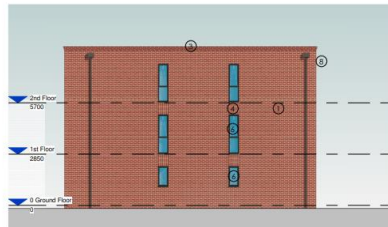


- Materials Schedule**
- 1 Brick to approved sample
 - 2 GRP Insulated Door with Vision Panel
 - 3 Composite Slate to approved sample
 - 4 Brick Headers & Corbelling to approved sample
 - 5 Lead Effect Downpipe to approved sample
 - 6 Double Glazed Window to approved sample
 - 7 Double Glazed Door to approved sample
 - 8 Black UPVC Rainwater Goods



Area Schedule GIA				
Number	Name	Level	Area	F
1	7 bed house	0 Ground Floor	72 m ²	773 #
2	7 bed house	0 Ground Floor	72 m ²	774 #
0 Ground Floor: 2			144 m ²	1547
1	7 bed house	1st Floor	73 m ²	789 #
2	7 bed house	1st Floor	73 m ²	790 #
1st Floor: 2			147 m ²	1577
1	7 bed house	2nd Floor	63 m ²	674 #
2	7 bed house	2nd Floor	63 m ²	673 #
2nd Floor: 2			126 m ²	1347
			415 m ²	4471

House Type F

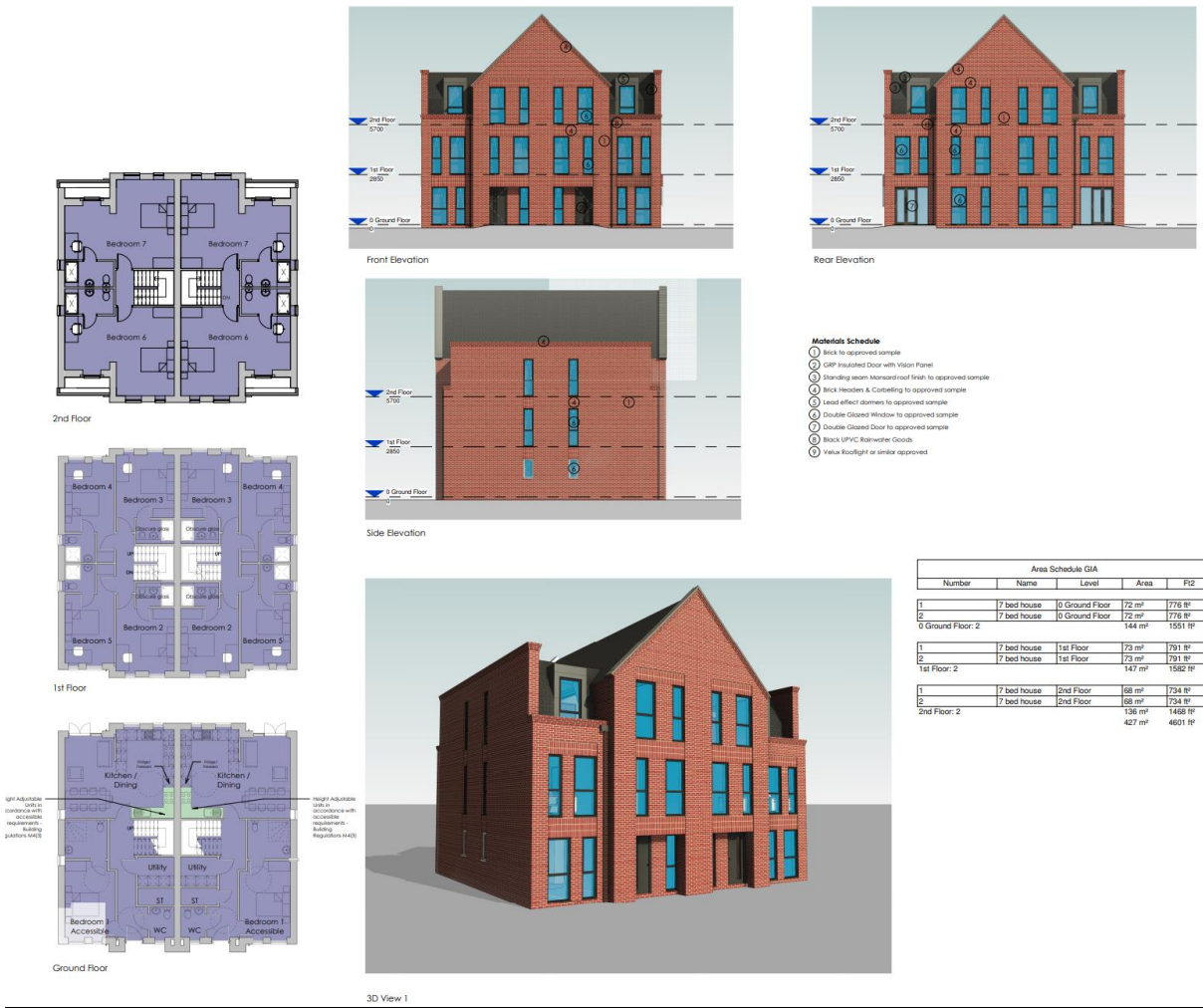


- Materials Schedule**
- ① Brick to approved sample
 - ② GWP Insulated Door with Vision Panel
 - ③ Standing seam aluminium roof finish to approved sample
 - ④ Brick Headers & Caseletting to approved sample
 - ⑤ Lead effect domes to approved sample
 - ⑥ Double Glazed Window to approved sample
 - ⑦ Double Glazed Door to approved sample
 - ⑧ Black UPVC Rainwater Goods

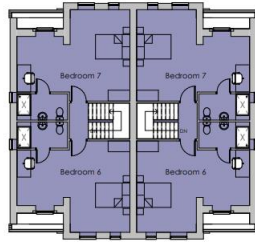


Area Schedule GIA				
Number	Name	Level	Area	
1	0 bed house	0 Ground Floor	77 m ²	833
2	0 bed house	0 Ground Floor	77 m ²	833
0 Ground Floor: 2			155 m ²	166
1	0 bed house	1st Floor	79 m ²	851
2	0 bed house	1st Floor	79 m ²	851
1st Floor: 2			158 m ²	170
1	0 bed house	2nd Floor	77 m ²	834
2	0 bed house	2nd Floor	77 m ²	833
2nd Floor: 2			155 m ²	166
			468 m ²	503

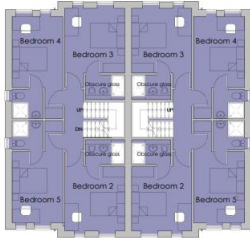
House Type G



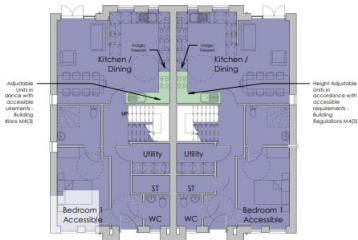
House Type H



2nd Floor



1st Floor



Ground Floor



Front Elevation



Rear Elevation



Side Elevation



3D View 1

Materials Schedule

- ⊖ Brick to approved sample
- ⊖ GRP Insulated Door with Vision Panel
- ⊖ Branding learn Maxford roof finish to approved sample
- ⊖ Brick Headers & Corbelling to approved sample
- ⊖ Lead effect downpipes to approved sample
- ⊖ Double Glazed Window to approved sample
- ⊖ Double Glazed Door to approved sample
- ⊖ Black UPVC Rainwater Gutter
- ⊖ Yellow Rooflight or similar approved

Area Schedule GIA				
Number	Name	Level	Area	
1	7 bed house	0 Ground Floor	72 m ²	776
2	7 bed house	0 Ground Floor	72 m ²	776
0 Ground Floor: 2			144 m ²	155
1	7 bed house	1st Floor	73 m ²	791
2	7 bed house	1st Floor	73 m ²	791
1st Floor: 2			147 m ²	156
1	7 bed house	2nd Floor	68 m ²	734
2	7 bed house	2nd Floor	68 m ²	734
2nd Floor: 2			136 m ²	146
			427 m ²	460

House Type H

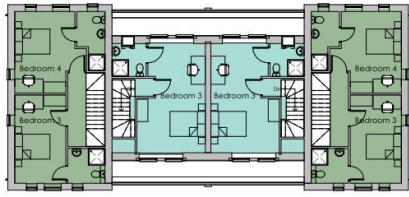


- Materials Schedule**
- 1 Brick to approved sample
 - 2 GWP Insulated Door with Vision Panel
 - 3 Composite Sash to approved sample
 - 4 Brick Header & Corbelling to approved sample
 - 5 Lead effect domers to approved sample
 - 6 Double Glazed Window to approved sample
 - 7 Double Glazed Door to approved sample
 - 8 Brick UPVC Rainwater Goods



Area Schedule GIA				
Number	Name	Level	Area	
1	9 bed house	0 Ground Floor	77 m ²	83
2	9 bed house	0 Ground Floor	77 m ²	83
0 Ground Floor: 2			155 m ²	16
1	9 bed house	1st Floor	79 m ²	84
2	9 bed house	1st Floor	79 m ²	85
1st Floor: 2			158 m ²	16
1	9 bed house	2nd Floor	78 m ²	83
2	9 bed house	2nd Floor	78 m ²	83
2nd Floor: 2			156 m ²	16

House Type I



2nd Floor



1st Floor



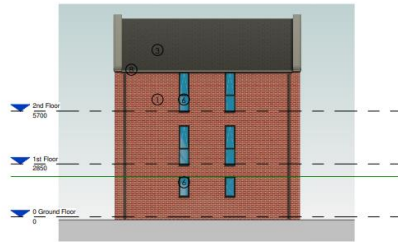
Ground Floor



Front Elevation



3D View 1



Side Elevation

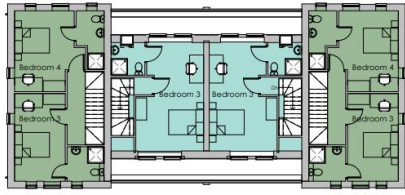
Materials Schedule

- ① Brick to approved sample
- ② GRP Insulated Door with Vision Panel
- ③ Composite Slate to approved sample
- ④ Brick Headers & Corbelling to approved sample
- ⑤ Lead effect cladding to approved sample
- ⑥ Double Glazed Window to approved sample
- ⑦ Double Glazed Door to approved sample
- ⑧ Black UPVC Rainwater Goods
- ⑨ Velux Rooflight or similar approved



Rear Elevation

House Types J and K



2nd Floor



1st Floor



Ground Floor



Front Elevation



3D View 1



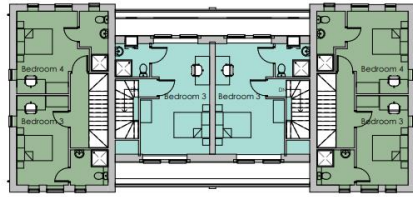
Side Elevation

- Materials Schedule**
- ① Brick to approved sample
 - ② GIP Insulated Door with Vision Panel
 - ③ Composite Slate to approved sample
 - ④ Brick Headers & Corbelling to approved sample
 - ⑤ Lead effect domes to approved sample
 - ⑥ Double Glazed Window to approved sample
 - ⑦ Double Glazed Door to approved sample
 - ⑧ Black UPVC Rainwater Goods
 - ⑨ Valley Rooflight or similar approved
 - ⑩ Juliet Balcony



Rear Elevation

House Types L and M



2nd Floor



1st Floor



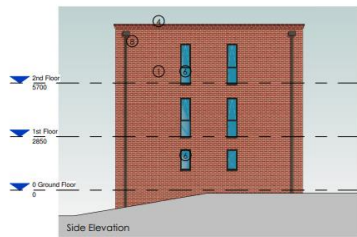
Ground Floor



Front Elevation



3D View 1



Side Elevation

Materials Schedule

- ① Brick to approved sample
- ② GRP Insulated Door with Vision Panel
- ③ Composite Slate to approved sample
- ④ Brick Headings & Coping to approved sample
- ⑤ Lead effect downpipes to approved sample
- ⑥ Double Glazed Window to approved sample
- ⑦ Double Glazed Door to approved sample
- ⑧ Black UPVC Rainwater Goods
- ⑨ Velux Rooflight or similar approved
- ⑩ Juliet Balcony



Rear Elevation

House Type N and O



Landscaping Details

Views from Coulson Road





Boultham Pump Drain



Views south from in the site

Cycle path to the east of the site





Access into the site



View to Coulson Road





Views east from the site



Views west from the site